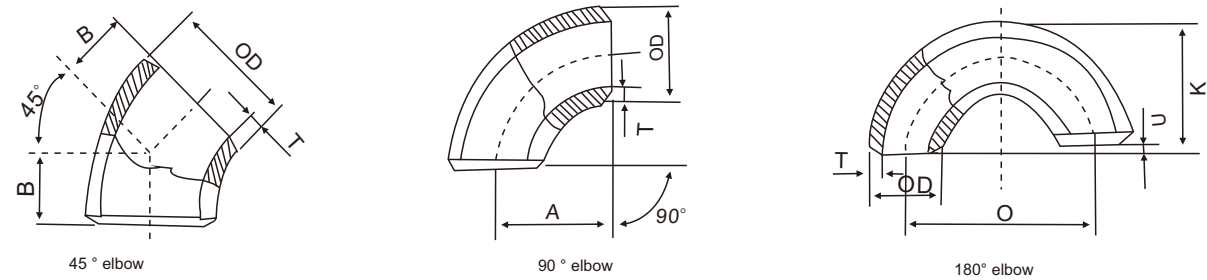


Long radius bend (45°90°180°)

Acc above dimensions. GB/T 12459/GB/T 13401, SH3408, SH 3409.
EN10253-4, ASME B16.9, MSS SP-43.DIN 2605, JIS B2313.

Weight is approximate, based on manufacturer's data, according to ASME B36.10m/B36.19m,
(According to GB/T 12459/GB/T 13401, weight is approximate, based on manufacturer's data)



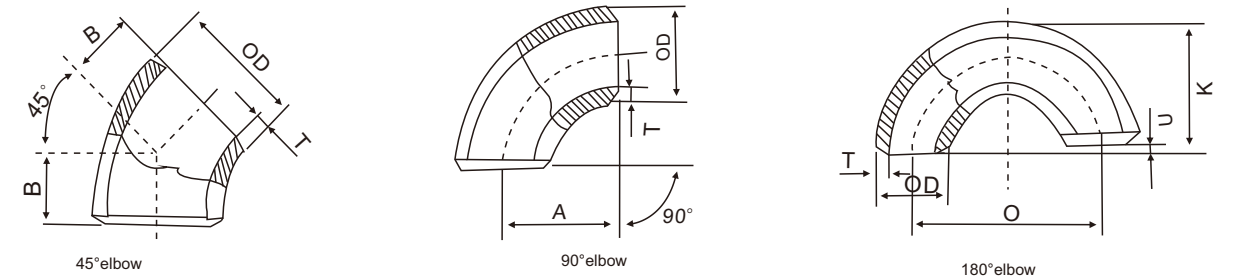
Unit: mm

Nominal diameter		Outer diameter	Distance from center to end face		Center to center The distance from the	90°L/R elbow theoretical weight kg/ PC					
DN	NPS	OD	B	A	O	sch5S	sch10S	sch20S/LG	sch40S/STD	sch80S/XS	sch80
15	1/2	18 21.3	16	38	76	0.04 0.05	0.05 0.06	0.06 0.07	0.06 0.08	0.08 0.10	0.08 0.10
20	3/4	25 26.7	19	38	76	0.06 0.06	0.07 0.08	0.09 0.09	0.09 0.10	0.12 0.13	0.12 0.13
25	1	32 33.4	22	38	76	0.07 0.08	0.12 0.13	0.14 0.14	0.14 0.15	0.19 0.19	0.19 0.19
32	1 1/4	38 42.2	25	48	96	0.11 0.13	0.18 0.20	0.21 0.23	0.23 0.26	0.30 0.34	0.30 0.34
40	1 1/2	45 48.3	29	57	114	0.16 0.17	0.26 0.28	0.30 0.32	0.34 0.37	0.45 0.49	0.45 0.49
50	2	57 60.3	35	76	152	0.27 0.29	0.45 0.47	0.57 0.61	0.62 0.65	0.85 0.90	0.85 0.90
65	2 1/2	76 73	44	95	190	0.58 0.55	0.82 0.79	0.97 0.93	1.35 1.30	1.79 1.71	1.79 1.71
80	3	89	51	114	228	0.82	1.17	1.51	2.04	2.76	2.76
90	3 1/2	101.6	57	133	266	1.09	1.56	2.03	2.85	3.92	3.92
100	4	108 114	64	152	304	1.32 1.40	1.90 2.01	2.47 2.61	3.64 3.85	5.05 5.35	5.05 5.35
125	5	133 141.3 139.7	79	190	380	2.67 2.84 2.81	3.27 3.47 3.43	4.74 5.05 4.99	6.14 6.54 6.46	8.72 9.31 9.19	8.72 9.31 9.19
150	6	168.3 159 165	95	229	458	4.10 3.86 4.01	5.01 4.72 4.91	7.29 6.88 7.14	10.24 9.64 10.03	15.41 14.50 15.09	15.41 14.50 15.09
200	8	219 216	127	305	610	7.12 7.03	9.63 9.49	15.94 15.71	20.51 20.22	31.17 30.71	31.17 30.71
250	10	273 267.4	159	381	762	13.62 13.34	16.74 16.39	24.97 24.44	36.33 35.56	49.12 48.06	57.83 56.57
300	12	325 323.9 318	190	457	914	22.66 22.58 22.16	26.10 26.01 25.53	35.79 35.66 35.00	53.58 53.40 52.39	70.69 70.44 49.11	95.81 95.46 93.63

Long radius bend (45°90°180°)

Acc above dimensions. GB/T 12459/GB/T 13401, SH3408, SH 3409.
EN10253-4, ASME B16.9, MSS SP-43.DIN 2605, JIS B2313.

Weight is approximate, based on manufacturer's data, according to ASME B36.10m/B36.19m,
(According to GB/T 12459/GB/T 13401, weight is approximate, based on manufacturer's data)



Unit: mm

Nominal diameter		Outer diameter	Distance from center to end face		Center to center The distance from the	90°L/R elbow theoretical weight kg/ PC					
DN	NPS	OD	B	A	O	sch5S	sch10S	sch20S/LG	sch40S/STD	sch80S/XS	sch80
350	14	377 355.6	222	533	1066	30.71 28.95	36.98 34.86	61.36 57.80	72.80 68.56	96.17 90.52	141.75 133.27
400	16	426 406.4	254	610	1220	42.05 40.09	47.90 45.67	79.55 75.82	94.42 89.98	124.87 118.95	206.35 196.35
450	18	478 457.2	286	686	1372	53.11 50.78	60.52 57.86	100.60 96.14	199.44 114.14	158.10 151.03	296.35 276.29
500	20	529 508	318	762	1524	74.47 71.48	86.18 82.72	123.86 118.87	147.12 141.14	194.86 186.94	391.34 375.00
550	22	559	343	838	1676	86.58	100.21	144.06	171.14	226.75	495.44
600	24	630 610	381	914	1828	123.32 119.37	141.21 136.64	177.37 171.67	210.78 203.98	279.45 270.40	661.10 -
650	26	660	406	991	1982	-	-	201.59	239.58	317.72	-
700	28	720 711	438	1067	2134	-	-	237.03 234.03	281.75 278.18	373.80 369.04	-
750	30	762	470	1143	2286	213.90	266.23	268.89	319.66	424.20	-
800	32	820 813	502	1219	2438	-	-	308.83 306.16	367.20 364.02	487.42 483.20	-
850	34	864	533	1295	2590	-	-	345.86	411.27	546.04	-
900	36	920 914	565	1372	2744	-	-	390.39 387.83	464.28 461.22	616.56 612.48	-
950	38	965	600	1448	2896	-	-	432.25	514.21	682.98	-
1000	40	1016 1020	632	1524	3048	-	-	479.29 481.19	570.09 572.35	757.33 760.35	-
1050	42	1067	660	1600	3200	-	-	528.65	628.85	835.51	-
1100	44	1118 1120	695	1676	3352	-	-	580.43 581.48	690.49 691.73	917.53 919.19	-
1150	46	1168	727	1753	3506	-	-	634.45	754.79	1003.10	-
1200	48	1220	759	1829	3658	-	-	691.63	822.85	1093.70	-