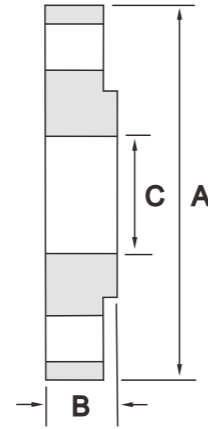


Bs4504 standard flange

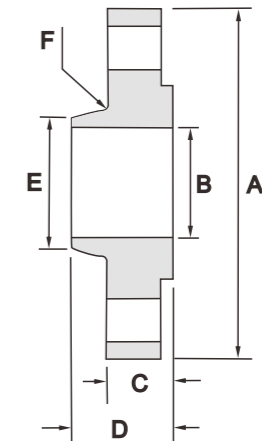


DN	PN	A mm	B mm	C mm
10	2.5,6	75	12	18.0
	10&16	90	14	
	25&40	90	14	
15	2.5,6	80	12	22
	10&16	95	14	
	25&40	95	14	
20	2.5,6	90	14	27.5
	10&16	105	16	
	25&40	105	16	
25	2.5,6	100	14	34.5
	10&16	115	16	
	25&40	115	16	
32	2.5,6	120	16	43.5
	10&16	140	18	
	25&40	140	18	
40	2.5,6	130	16	49.5
	10&16	150	18	
	25&40	150	18	
50	2.5,6	140	16	61.5
	10&16	165	20	
	25&40	165	20	
65	2.5,6	160	16	77.5
	10&16	185	20	
	25&40	185	22	
80	2.5,6	190	18	90.5
	10&16	200	20	
	25&40	200	24	
100	2.5,6	210	18	116.0
	10&16	220	22	
	25&40	235	26	
125	2.5,6	240	20	141.5
	10&16	250	22	
	25&40	270	28	
150	2.5,6	265	20	170.5
	10&16	285	24	
	25&40	300	30	
200	2.5,6	320	22	221.5
	10&16	340	24	
	25	360	32	
	40	375	36	
250	2.5,6	375	24	276.5
	10	395	26	
	16	405	29	
	25	425	35	
40	450	42		

DN	PN	A mm	B mm	C mm
300	2.5,6	440	24	327.5
	10	445	26	
	16	460	32	
	25	485	38	
350	40	515	48	359.5
	2.5,6	490	26	
	10	505	28	
	16	520	35	
400	25	555	42	411.0
	40	580	54	
	2.5,6	540	28	
	10	565	32	
450	16	580	38	462.0
	25	620	46	
	40	660	60	
	2.5,6	595	30	
500	10	615	36	513.5
	16	640	42	
	25	670	50	
	40	685	66	
600	2.5,6	645	30	616.5
	10	670	38	
	16	715	46	
	25	730	56	
700	40	755	72	To be specified by purchaser
	2.5,6	755	32	
	10	780	42	
	16	840	52	
800	25	845	68	To be specified by purchaser
	40	890	84	
	2.5	860	36	
	2.5	975	38	
900	2.5	1075	40	To be specified by purchaser
	2.5	1175	42	
	2.5	1375	44	
	2.5	1575	48	
1000	2.5	1790	51	To be specified by purchaser
	2.5	1990	54	
	2.5	2190	58	
	2.5	2190	58	

- Notes
- Dimension B is the flange thickness with or without a raised face.
 - For drilling details see page 8-64.
 - For tolerances see page 8-61.
 - For facing types and dimensions see page 8-62.

Bs4504 standard flange



DN	PN	A mm	B mm	C mm	D mm	E mm	F mm
10	6	75	12	20	25	3	
	10&16	90	18.0	14	30		
	25&40	90	16	22	30		
	6	80	12	20	30		
15	10&16	95	22	14	20	30	3
	25&40	95	16	22	35		
	6	90	14	24	40		
20	10&16	105	27.5	16	24	45	4
	25&40	105	18	26	45		
	6	100	14	24	50		
25	10&16	115	34.5	16	24	52	4
	25&40	115	18	28	52		
	6	120	14	26	60		
32	10&16	140	43.5	16	26	60	5
	25&40	140	18	30	60		
	6	130	14	26	70		
40	10&16	150	49.5	16	26	70	5
	25&40	150	18	32	70		
	6	140	14	28	80		
50	10&16	165	61.5	18	28	84	5
	25&40	165	20	34	84		
	6	160	14	32	100		
65	10&16	185	77.5	18	32	104	6
	25&40	185	22	38	104		
	6	190	16	34	110		
80	10&16	200	90.5	20	34	118	6
	25&40	200	24	40	118		
	6	210	16	40	130		
100	10&16	220	116.0	20	40	140	6
	25&40	235	24	44	145		
	6	240	18	44	160		
125	10&16	250	141.5	22	44	168	6
	25&40	270	26	48	170		
	6	265	18	44	185		
150	10&16	285	170.5	22	44	195	8
	25&40	300	28	75	190		

- Notes
- The hubs of slip on (code 112) flanges are parallel or have a draft <7 degrees.
 - For drilling details see page 8-64.
 - For tolerances see page 8-61.
 - For facing types and dimensions see page 8-62.

DN	PN	A mm	B mm	C mm	D mm	E mm	F mm
200	6	320	20	44	240	221.5	8
	10&16	340	24	44	246		
	25	360	30	52	256		
	40	375	34	52	260		
250	6	375	22	44	295	276.5	10
	10	395	26	46	298		
	16	405	26	46	298		
	25	425	32	60	310		
300	40	450	38	60	312	327.5	10
	6	440	22	44	355		
	10	445	26	46	350		
	16	460	28	46	350		
350	25	485	34	67	364	359.5	10
	40	515	42	67	380		
	6	505	26	53	400		
	16	520	30	57	400		
400	25	555	38	72	418	411.0	10
	40	580	46	72	424		
	10	565	26	57	456		
	16	580	32	63	456		
450	25	620	40	78	472	462.0	12
	40	660	50	78	478		
	10	615	28	63	502		
	16	640	34	68	502		
500	25	670	42	84	520	513.5	12
	40	685	50	84	522		
	10	670	28	67	559		
	16	715	34	73	559		
600	25	730	44	90	580	616.5	12
	40	755	52	90	576		
	10	780	28	75	658		
	16	840	36	83	658		
-	25	845	46	100	684	686	-
	40	890	60	100	686		
	-	-	-	-	-		