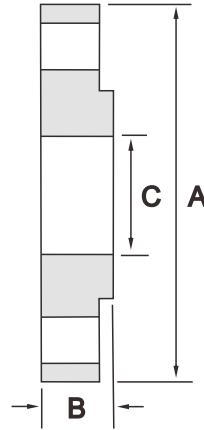
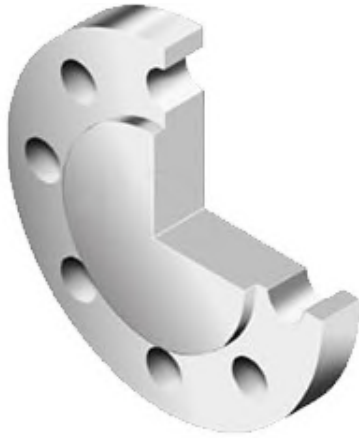


Bs4504 standard flange



DN	PN	A mm	B mm	C mm
10	2.5,6	75	12	-
	10&16	90	14	-
	25&40	90	16	-
15	2.5&6	80	12	-
	10&16	95	14	-
20	25&40	95	16	-
	2.5&6	90	14	-
	10&16	105	16	-
25	25&40	105	18	-
	2.5&6	100	14	-
	10&16	115	16	-
32	25&40	115	18	-
	2.5&6	120	14	-
	10&16	140	16	-
40	25&40	140	18	-
	2.5&6	130	14	-
	10&16	150	16	-
50	25&40	150	18	-
	2.5&6	140	14	-
	10&16	165	18	-
65	25&40	165	20	-
	2.5&6	160	14	55
	10&16	185	18	55
80	25&40	185	22	55
	2.5&6	190	16	70
	10&16	200	20	70
100	25&40	200	24	70
	2.5&6	210	16	90
	10&16	220	20	90
125	25&40	235	24	90
	2.5&6	240	18	115
	10&16	250	22	115
150	25&40	270	26	115
	2.5&6	265	18	140
	10&16	285	22	140
200	25&40	300	28	140
	2.5&6	320	20	190
	10&16	340	24	190
250	25	360	30	190
	40	375	34	190
	2.5&6	375	22	235
	10	395	26	235
250	16	405	26	235
	25	425	32	235
	40	450	38	235

DN	PN	A mm	B mm	C mm
300	2.5,6	440	22	285
	10	445	26	285
	16	460	28	285
	25	485	34	285
350	40	515	42	285
	2.5,6	490	22	325
	10	502	26	325
	16	520	30	325
400	25	555	38	325
	40	580	46	325
	2.5,6	540	22	375
	10	565	26	375
450	16	580	32	375
	25	620	40	375
	40	660	50	375
	2.5,6	595	24	425
500	10	615	28	425
	16	640	34	425
	25	670	42	425
	40	685	54	425
600	2.5,6	645	24	475
	10	670	28	475
	16	715	36	475
	25	730	45	475
700	40	755	56	475
	2.5,6	755	34	575
	10	780	34	575
	16	840	44	575
800	25	845	54	575
	40	890	70	575
	2.5	860	36	-
	6	860	38	-
900	10	895	38	670
	16	910	48	670
	2.5	975	38	-
	6	975	42	-
1000	10	1015	42	770
	16	1025	52	770
	2.5	1075	40	-
	6	1075	46	-
1200	10	1115	46	860
	16	1125	58	860
	2.5	1175	42	-
	6	1175	52	-
1400	10	1230	52	960
	16	1255	64	960
	2.5	1375	44	-
	6	1405	60	-
1600	10	1455	60	1160
	16	1485	76	1160
	2.5	1575	48	-
	6	1630	68	-
1800	2.5	1790	51	-
	6	1830	76	-
	2.5	1990	54	-
	6	2045	84	-
2000	2.5	2190	58	-
	6	2265	92	-

Notes

- Dimension B is the flange thickness with or without a raised face.
- Dimension C is the maximum diameter of the centre partition of a blank flange face which need not be machined.
- For drilling details see page 8-64.
- For tolerances see page 8-61.
- For facing types and dimensions see page 8-62.